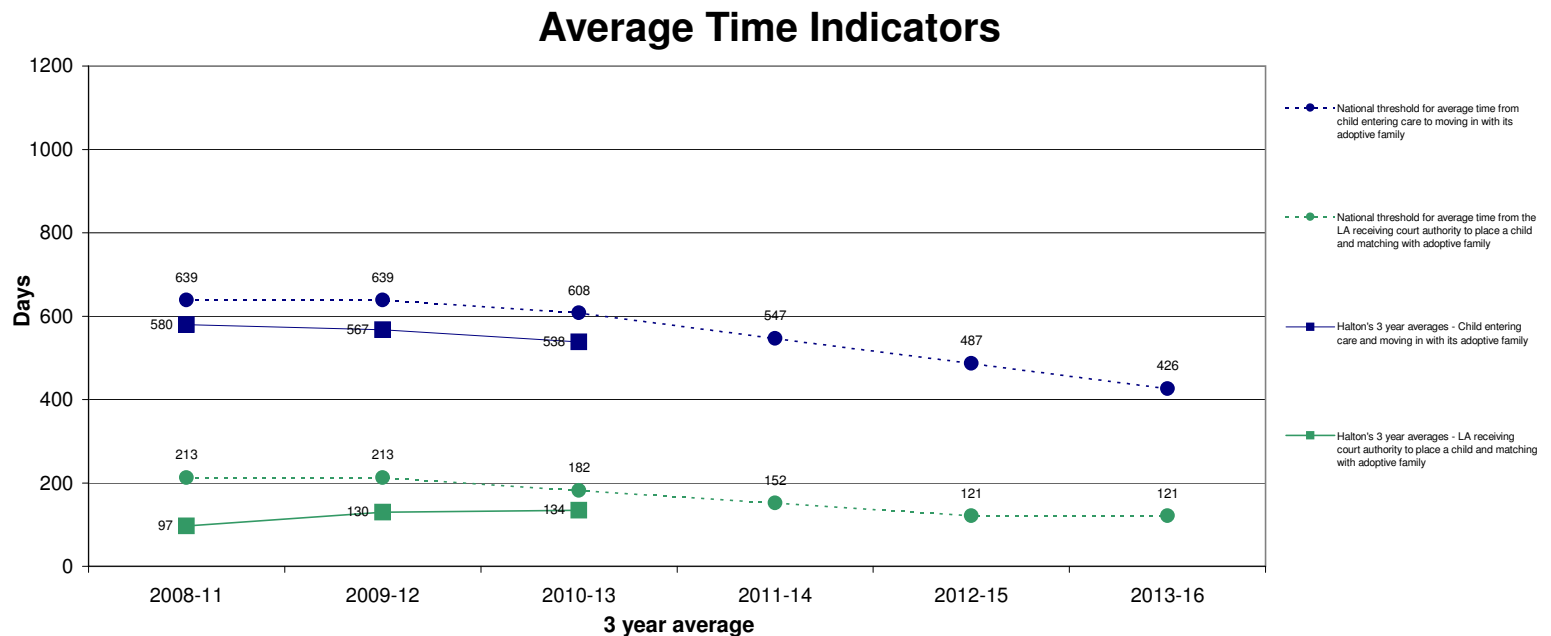


Adoption Scorecard

Choose Local Authority ▼

Children

	Average time between a child entering care and moving in with its adoptive family, for children who have been adopted (days)	Average time between a local authority receiving court authority to place a child and the local authority deciding on a match to an adoptive family (days)	Children who wait less than 20 months between entering care and moving in with their adoptive family (number and %)
LA's 3 year average (2010-13)	538	134	35 (65%)
1 year trend - Improvement from 2012 to 2013	n/a	n/a	n/a
3 year trend - Improvement from 2009-12 to 2010-13	Average time in 2010-13 was shorter than in 2009-12	Average time in 2010-13 was longer than in 2009-12	n/a
England 3 year average (2010-13)	647	210	11,360 (55%)
Distance from 2010-13 performance threshold	Threshold met	Threshold met	n/a



Adopters

	Number of approved adoptive families as at 31 March 2013	Proportion of adoptive families who were matched to a child during 2012-13 who waited more than 3 months from approval to being matched to a child
LA average	9	100
England	4,195	58

Related Information

	Adoptions from care (number adopted and % leaving care who are adopted)	Number and % of children for whom the permanence decision has changed away from adoption	Average time between a child entering care and moving in with its adoptive family. Where times for children who are adopted by their foster family are stopped at the date the child moved in with the foster family (days)	Adoptions of children from ethnic minority backgrounds (number adopted and % of BME children leaving care who are adopted)	Adoptions of children aged five or over (number adopted and % of children aged 5 or over leaving care who are adopted)	Average length of care proceedings locally (weeks)	Number of children awaiting adoption (as at 31 March 2013)	Number of applications for approval as an adopter still being assessed (not yet approved or rejected) as at 31 March 2013
LA's 3 year average (2010-13)	30 (16%)	x (x%)	486	0 (x%)	x (x%)	53	20	6
England 3 year average (2010-13)	10,540 (13%)	2,020 (9%)	545	1,600 (7%)	2,580 (4%)	51	6,890	2,506